

Climate Change Scenarios

Guideline document GD15

November 2024



Climate Change Scenarios

Guideline document GD15

©2024 Auckland Council New Zealand

November 2024

ISSN 2230-4541 (Print)

ISSN 2230-455X (Online)

ISBN 978-1-991146-30-4 (Print)

ISBN 978-1-991146-31-1 (PDF)

Reviewed and recommended for publication by:

Name: Petra Pearce

Position: Lead Climate Resilience Advisor, Auckland Council

Approved for publication by:

Name: Kataraina Maki

Position: Chief Sustainability Officer, Auckland Council

Recommended citation:

Auckland Council (2024). Climate Change Scenarios. Auckland Council guideline document GD15

© 2024 Auckland Council, New Zealand

Auckland Council disclaims any liability whatsoever in connection with any action taken in reliance of this document for any error, deficiency, flaw or omission contained in it.

This publication is provided strictly subject to Auckland Council's copyright and other intellectual property rights (if any) in the publication. Users of the publication may only access, reproduce and use the publication, in a secure digital medium or hard copy, for responsible genuine non-commercial purposes relating to personal or public service, provided that the publication is only ever accurately reproduced and proper attribution of its source, publication date and authorship is attached to any use or reproduction. This publication must not be used in any way for any commercial purpose without the prior written consent of Auckland Council. The use of this publication for professional training purposes, regardless whether payable or free of charge, also requires Auckland Council's prior written consent. Auckland Council does not give any warranty whatsoever, including without limitation, as to the availability, accuracy, completeness, currency or reliability of the information or data (including third party data) made available via the publication and expressly disclaim (to the maximum extent permitted in law) all liability for any damage or loss resulting from your use of, or reliance on the publication or the information and data provided via the publication. The publication, information, and data contained within it are provided on an "as is" basis.

Acknowledgements

This document was prepared with technical input from Auckland Council experts including, but not limited to the following individuals:

Author

Petra Pearce, Lead Climate Resilience Advisor, Auckland Council

Contributors

Fiona Macdonald, Branko Veljanovski, Natasha Carpenter, Tian Liu, Tony Bullard, Christopher Turbott, Lee-Ann Lucas, Kevin Montgomerie.

Contents

Preface	i
1.0 Introduction	1
1.1 Why do we need to use consistent climate change projections across Auckland Council?	1
1.2 What are climate scenarios?	1
2.0 Climate change and sea-level rise projections for Auckland	3
2.1 Temperature	3
2.2 Rainfall	3
2.3 Sea-level rise	4
3.0 Next steps	8
4.0 References	9

Figures

Figure 1: Vertical Land Movement rates across Auckland. For location-specific VLM rates refer to NZSeaRise online tool.	6
Figure 2: Example from NZSeaRise showing SSP5-8.5 projections for a central Auckland location.	7

Tables

Table 1: Percentage change factors per degree of warming to project rainfall depths based on the current climate to a future climate scenario.	4
Table 2: Auckland region sea-level rise projections (in metres). 50th percentile for SSPs except H+ (83rd percentile).....	5
Table 3: Interim precautionary relative sea-level rise allowances recommended to use for coastal planning and policy before undertaking a dynamic adaptive pathways planning approach for a precinct, district or region.....	8

Preface

What is the purpose and objectives of this guideline?

Te Tāruke-ā-Tāwhiri: Auckland's Climate Plan underscores the imminent challenge of a projected 3.5°C (or more) temperature increase by 2110 under a high emissions scenario (RCP8.5). To follow the direction set by Te Tāruke-ā-Tāwhiri, projects should use a temperature value of at least 3.5°C. In practice, this means that all projects within Auckland Council should adhere to the statistical downscaled projection value of 3.8°C (RCP8.5 at 2110 for Auckland).

However, the plan lacks specificity regarding the technical assumptions guiding its various components, resulting in inconsistencies in how different sectors within Auckland Council and its CCOs approach their climate adaptation initiatives. This guideline seeks to address this by promoting a standardised implementation of Te Tāruke-ā-Tāwhiri: Auckland's Climate Plan, ensuring a cohesive approach across the Council group. It also furnishes projections, sourced from NIWA's climate projections for Auckland (Pearce et al., 2020), encompassing mean annual temperature and high-intensity rainfall, and sea-level rise projections from the more recent NZ SeaRise project (2022).

This guideline serves as a foundational framework, facilitating the effective operationalisation of Te Tāruke-ā-Tāwhiri: Auckland's Climate Plan. It establishes a critical link between the plan and Auckland Council's regulatory and asset owners' "control" tools, such as the family of documents including the Stormwater Code of Practice (SWCoP), Auckland Transport Code of Practice (ATCOP), and codes of practice for water and wastewater, etc. By providing a consistent set of technical assumptions and requirements, this document becomes an integral component integrated into Auckland Council's standards and codes of practice family, introducing uniformity and application of the technical requirements (referenced in this document) in practice.

The successful realisation of the plan's core adaptation goal, aiming to "*adapt to the impacts of climate change by ensuring we plan for the changes we face under our current emissions pathway*", hinges on the adequate and consistent implementation of this guideline. It is essential for both Auckland Council and industry to adopt and adhere to this document.

It is noteworthy that this document primarily caters to professionals, designers, developers, and regulators, offering technical design guidance to support Auckland Council's asset ownership, infrastructure operations, and regulatory functions.

Future revisions

Auckland Council intends to provide future revisions to this guideline periodically in response to changes in climate science, good practice, legislation, policies, technologies, national standards, and feedback from industry. There is a feedback form available to download along with this document which can be sent to climate@aucklandcouncil.govt.nz.

1.0 Introduction

1.1 Why do we need to use consistent climate change projections across Auckland Council?

Te Tāruke-ā-Tāwhiri: Auckland's Climate Plan states that we will plan for our current emissions pathway, which will result in an average warming of '3.5°C or more by 2110'. Further information on specific technical assumptions is not provided in the plan. As a result, different parts of the Auckland Council group, in progressing their climate adaptation work, may have already adopted their own assumptions.

NIWA produced climate change projections for the Auckland region in 2020 (Pearce et al., 2020). This report contains maps and tabular data, and the geospatial datasets are available on request. NZ SeaRise produced updated sea-level rise projections in 2022 (Ministry for the Environment, 2024).

This guideline gives projections to be used across the Auckland Council group for temperature, high intensity rainfall and sea-level rise.

1.2 What are climate scenarios?

Scenario-based climate projections (including sea-level rise) for the IPCC Fifth Assessment Report (AR5) (2013) were based on four representative climate futures, known as representative concentration pathways (RCPs). These futures were represented by a radiative forcing of warming that could be reached in 2100, ranging from 2.6, 4.5, 6.0 to 8.5 Watts/m² of additional climate forcing¹ since the pre-industrial era. More information about RCPs can be found in Pearce et al. (2020). The baseline for the downscaled AR5 projections for New Zealand is 1995 (average over 1986-2005).

IPCC's Sixth Assessment Report (AR6) shifted to a new integrated set of future representative scenarios, based on shared socio-economic pathways (SSPs), comprising socio-economic assumptions and changes that influence future emissions trajectories. These scenarios, which complement the RCPs, span a wide range of plausible societal and climate futures from a 1.5°C best-estimate warming to over 4°C warming by 2100.

NIWA climate projections for Auckland (Pearce et al., 2020) use the RCP scenarios, whereas the NZ SeaRise sea-level rise projections (released in 2022) use the SSP scenarios. Updated NIWA projections for New Zealand, released in mid-2024, use the SSP scenarios. This guideline will be updated following the release of Auckland-specific projections from NIWA in 2025.

¹ Radiative or climate forcing is the increase in the difference between incoming (downward) and outgoing (upward) energy (in Watts per m²) for the Earth's atmosphere, due to a change in an external driver of climate change, such as a change in the concentration of carbon dioxide, volcanic aerosols or albedo (land surface reflectance).

Local government must have regard to the National Adaptation Plan (Ministry for the Environment, 2022a) when making or changing regional policy statements, regional plans, or district plans. The National Adaptation Plan recommends:

- Using the best available data for the middle-of-the-road scenario (SSP2-4.5 or RCP4.5) and the fossil-fuel intensive development scenario (SSP5-8.5 or RCP8.5)
- Screening hazard and risk assessments for longer-term coastal impacts up to 2130 (SSP5-8.5 or RCP8.5).

The National Adaptation Plan recommends local governments should use these two climate change scenarios at a minimum. However, where possible, local governments are encouraged to use the full range of relevant scenarios. The Ministry for the Environment (2022b) provides guidance around the use of climate scenarios under the Resource Management Act.

The following scenarios are described in the National Adaptation Plan guidance note (Ministry for the Environment, 2022b).

1.2.1 Middle-of-the-road scenario

This scenario (SSP2-4.5 or RCP4.5) reflects moderate emissions and implementation of current global emissions reduction policy settings. It represents limiting the rise in global air temperature to 2.7°C by 2100.

By 2100, New Zealand could see air temperature increase by an average of 1.6°C (or a range of 1.03-2.26°C), and sea-level rise by an average 0.57 m (or a range of 0.44-0.78 m), before any vertical land movement is included.

1.2.2 Fossil-fuel intensive scenario

This scenario (SSP5-8.5 or RCP8.5) broadly aligns with emissions-reduction practice over the past few decades. It reflects high emissions, limited mitigation measures and no global emissions reduction policy settings. This scenario represents a rise in global air temperature to 4.4°C by 2100.

By 2100, New Zealand could see air temperature increase by an average of 3.1°C (or a range of 2.20-4.05°C), and sea-level rise by an average 0.83 m (or a range of 0.67-1.09 m), before any vertical land movement is included.

2.0 Climate change and sea-level rise projections for Auckland

2.1 Temperature

Pearce et al. (2020) provides downscaled mean annual temperature² projections for Auckland using both statistical and dynamical downscaling methods (Tables 3-1 and 3-2 in Pearce et al., 2020).

Te Tāruke-ā-Tāwhiri: Auckland's Climate Plan states that Auckland faces a future of 3.5°C (or more) of warming under a high emissions pathway (RCP8.5) by 2110. This value is the average of the regionally averaged statistical and dynamical mean annual temperature downscaled projections provided in Pearce et al. (2020) (3.8°C (statistical) and 3.3°C (dynamical)). To follow the direction set by Te Tāruke-ā-Tāwhiri, projects should use a mean temperature change value of at least 3.5°C. In practice, this means that the statistical downscaled projection value of 3.8°C should be used (RCP8.5 at 2110 for Auckland).

For more detail on temperature projections for other scenarios and time periods, refer to the statistical downscaled projections in Table 3-1 in Pearce et al. (2020). Projections for other temperature indices, e.g. hot days, are available in Pearce et al. (2020).

2.2 Rainfall

2.2.1 Average rainfall

As rainfall is highly spatially variable across the Auckland region, a regional rainfall average should not be used for planning purposes. Rainfall projections with climate change are available as maps in Pearce et al. (2020) or GIS layers by request.

2.2.2 High intensity rainfall

Technical publication 108 (TP108, Auckland Regional Council, 1999) describes how to calculate local-scale 24-hour rainfall depths and intensities under the present climate. For future climate scenarios, both an adjusted dimensionless profile and adjusted 24-hour depths should be used. The adjusted dimensionless profile, as well as adjustment factors for specified temperature increases, are provided in the Stormwater Code of Practice (Auckland Council). Rainfall adjustment factors are based on projected change in Auckland's mean annual temperature (as outlined in Section 2.1 above) as well as the 24-hour augmentation factors in Table 4-3 of Pearce et al. (2020) and replicated below in Table 1.

² The average of the mean daily maximum and mean daily minimum temperatures.

Table 1: Percentage change factors per degree of warming to project rainfall depths based on the current climate to a future climate scenario. These numbers represent the best estimate based on currently available information. From Pearce et al. (2020)

Duration/ARI	2-year	5-year	10-year	20-year	30-year	50-year	100 year
1 hour	12.2	12.8	13.1	13.3	13.4	13.5	13.6
2 hours	11.7	12.3	12.6	12.8	12.9	13.0	13.1
6 hours	9.8	10.5	10.8	11.1	11.2	11.3	11.5
12 hours	8.5	9.2	9.5	9.7	9.8	9.9	10.1
24 hours	7.2	7.8	8.1	8.2	8.3	8.4	8.6
48 hours	6.1	6.7	7.0	7.2	7.3	7.4	7.5
72 hours	5.5	6.2	6.5	6.6	6.7	6.8	6.9
96 hours	5.1	5.7	6.0	6.2	6.3	6.4	6.5
120 hours	4.8	5.4	5.7	5.8	5.9	6.0	6.1

2.3 Sea-level rise

The Ministry for the Environment (2024) updated the recommended sea-level rise projections from the previous set of projections recommended by them in 2017, (the Coastal Hazards and Climate Change Guidance Manual). These new projections were published by the NZSeaRise³ project in 2022 at 2 km intervals around New Zealand’s coastline using the SSP scenarios. The New Zealand Coastal Policy Statement 2010 (NZCPS) requires national guidance (i.e. MfE, 2024) and the latest sea-level risk information (i.e. NZSeaRise) to be taken into account when considering hazard risks at the coast (Policy 24 of NZCPS).

Table 2 provides projections of absolute sea-level rise for the Auckland region. The baseline for these projections is 1995-2014 (2005), compared with the 1995 baseline for the atmospheric projections. The reason for this is that the sea-level rise projections use the IPCC AR6, whereas Pearce et al. (2020) use the IPCC AR5. Table 2 presents the medium confidence projections from NZSeaRise which go out to 2150. Low confidence projections out to 2300 are available on the NZSeaRise website.

³ www.searise.nz

Table 2: Auckland region sea-level rise projections (in metres). 50th percentile for SSPs except H+ (83rd percentile). Medium confidence projections from NZSeaRise. Projections excluding VLM.

	SSP2-4.5	SSP3-7.0	SSP5-8.5	SSP5-8.5 H+
2005	0	0	0	0
2030	0.11	0.11	0.11	0.15
2040	0.16	0.16	0.18	0.23
2050	0.22	0.24	0.26	0.33
2060	0.28	0.31	0.34	0.44
2070	0.35	0.4	0.44	0.58
2080	0.42	0.5	0.56	0.74
2090	0.5	0.61	0.69	0.91
2100	0.58	0.74	0.84	1.11
2110	0.67	0.84	0.95	1.31
2120	0.74	0.96	1.09	1.5
2130	0.82	1.08	1.22	1.69

The projections published on NZSeaRise include vertical land movement (VLM). VLM is an important consideration when planning future coastal activities as subsiding land increases the rate of relative sea-level rise, whereas land undergoing uplift may experience slower rates of relative sea-level rise. The rates of VLM vary within the Auckland region, as shown in Figure 1. However, most of the region is undergoing subsidence (blue shades). Figure 2 shows the difference between the projections for absolute sea-level rise and projections including VLM.

For work undertaken at a local scale (e.g. beach scale), sea-level rise projections including VLM should be used, which can be accessed from the NZSeaRise website. Consideration should also be given to the error margin and quality of this data in defining the rate of VLM in the area.

It is also important to consider the potential extent of coastal flooding and the risk of extreme events to Auckland (refer to Roberts et al., 2020) and the changing frequencies of coastal flooding due to sea-level rise. The Parliamentary Commissioner for the Environment (2015) shows that storm surge in addition to sea-level rise is important to consider because of the significant change in the frequency of exceedance of present day's 1% AEP storm-tide elevation with sea-level rise increments. For example, an event that has a 1% AEP (a 1% chance of happening in any given year) under current sea level, levels will be exceeded every 6 months with 50 cm of sea-level rise and exceeded every day with 100 cm of sea-level rise at the Port of Auckland.

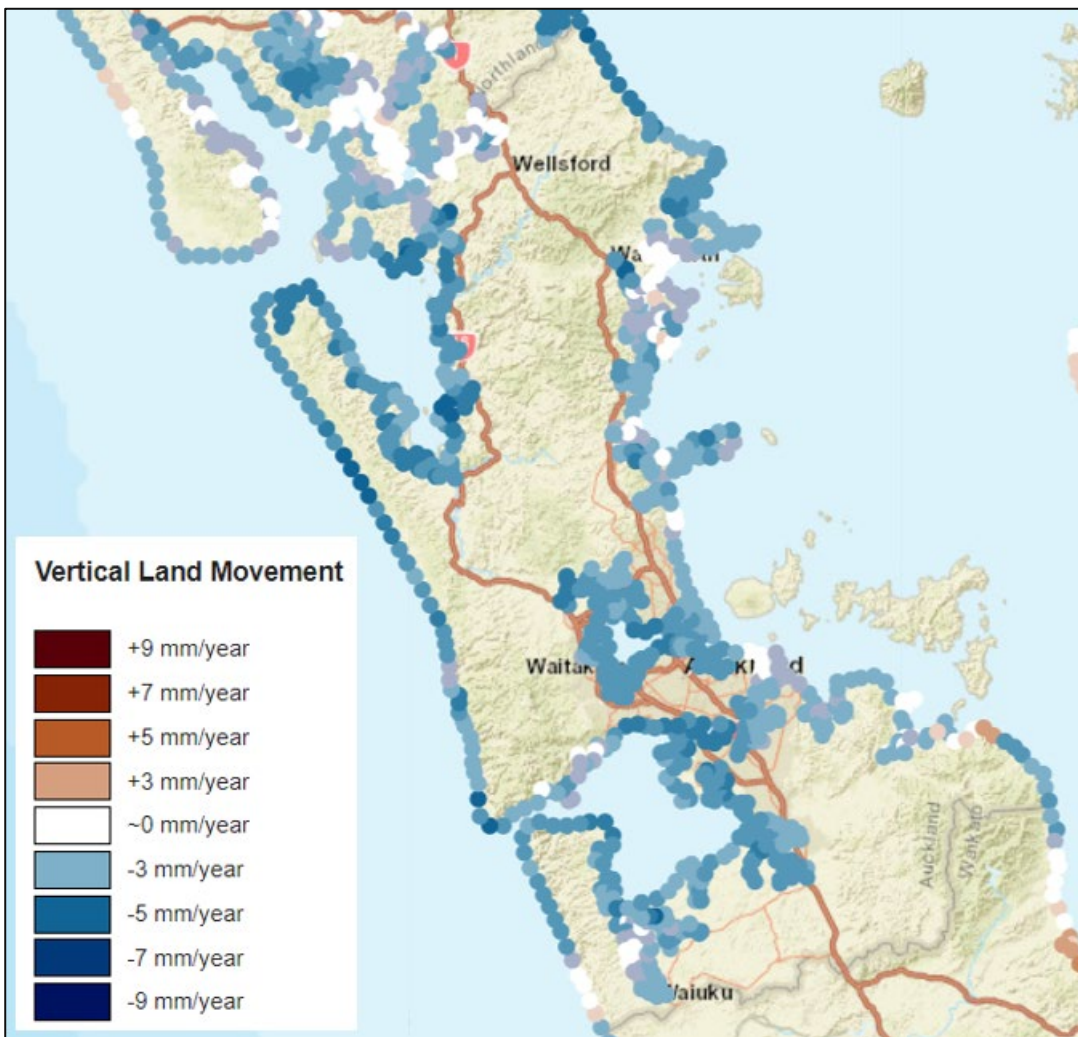


Figure 1: Vertical Land Movement rates across Auckland. For location-specific VLM rates refer to NZSeaRise online tool. Source: NZSeaRise (www.searise.nz)

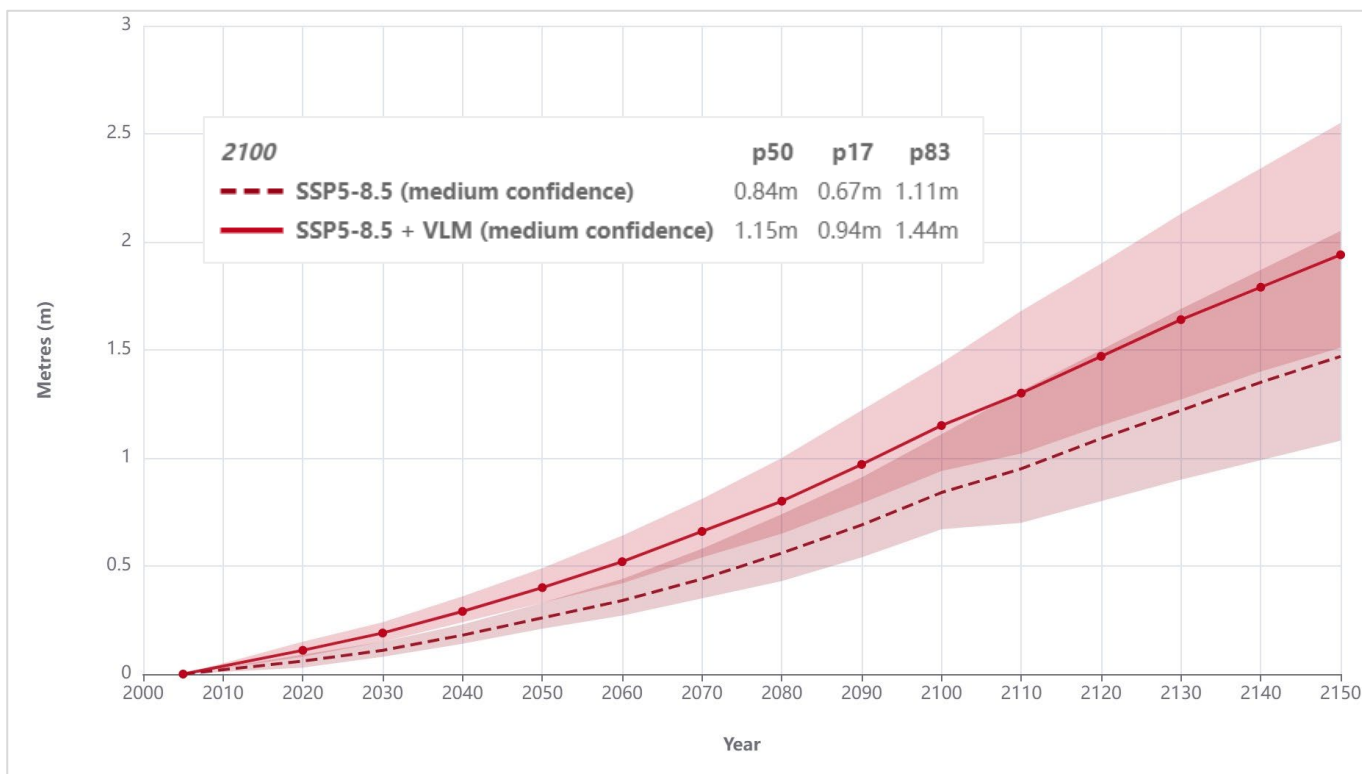


Figure 2: Example from NZSeaRise showing SSP5-8.5 projections for a central Auckland location.

The dashed line and associated shaded area are for absolute sea-level rise projections, and the solid line and associated area are for sea-level rise projections including vertical land movement. The dashed/solid red line is the 50th percentile (p50), the top of the shaded area is the 83rd percentile (p83, or SSP5-8.5 H), and the bottom of the shaded area is the 17th percentile (p17). The inset legend shows projections for 2100.

3.0 Next steps

This first version of Auckland Council’s climate scenarios guideline, GD15, gives projections and scenarios to be used across the Council group for mean annual temperature, high intensity rainfall and sea-level rise. In 2025, this guideline will be updated to include the latest AR6 climate change projections for Auckland as well as information on which scenarios to use for different activity and development types in Auckland. In the interim, for coastal activities, the guidance published by the Ministry for the Environment (2024) can be used (Table 8 in Ministry for the Environment, 2024, copied in Table 3 below).

Table 3: Interim precautionary relative sea-level rise allowances recommended to use for coastal planning and policy before undertaking a dynamic adaptive pathways planning approach for a precinct, district or region (from Ministry for the Environment, 2024)

Planning category	Recommended interim precautionary RSLR allowances
A. Coastal subdivision, greenfield developments and major new infrastructure	<ul style="list-style-type: none"> Using a timeframe out to 2130 (≥ 100 years), apply the <i>medium confidence</i> SSP5-8.5 H+ based RSLR projection* that includes the relevant VLM rate for the local and/or regional area. (Note: approximately 1.6 m rise in MSL, before including VLM.)
B. Changes in land use and redevelopment (intensification and upzoning)	<ul style="list-style-type: none"> Using a timeframe out to 2130 (≥ 100 years), apply the <i>medium confidence</i> SSP5-8.5 H+ based RSLR projection* that includes the relevant VLM rate for the local and/or regional area. (Note: approximately 1.6 m rise in MSL, before including VLM.)
C. Land-use planning controls for existing coastal uses and assets (building additions)	<ul style="list-style-type: none"> Using a timeframe out to 2130 (≥ 100 years), apply the <i>medium confidence</i> SSP5-8.5 M based RSLR projection that includes the relevant VLM rate for the local and/or regional area. (Note: approximately 1.2 m rise in MSL, before including VLM.)
D. Non-habitable, short-lived assets with a functional need to be at the coast, which are either low consequences or readily adaptable (including services)	<ul style="list-style-type: none"> Using a timeframe out to 2075 (≥ 50 years), apply the <i>medium confidence</i> SSP5-8.5 M based RSLR projection that includes the relevant VLM rate for the local and/or regional area. (Note: approximately 0.5 m rise in MSL, before including VLM.)

Notes:

* H+ is the 83rd percentile (or p83 at the top of the likely range on graphs in the NZ SeaRise platform).

- Relative sea-level rise that include satellite-derived vertical land movement (VLM) are available from the NZ SeaRise platform. Alternatively, locally monitored VLM can be applied to the sea-level rise projections.
- M = median or p50 (50th percentile); MSL = mean sea level; RSLR = relative sea-level rise; SSP = shared socio-economic pathway used by the Intergovernmental Panel on Climate Change; VLM = vertical land movement.

The approximate rise in MSL can be considered broadly representative across Aotearoa New Zealand, because the absolute sea-level rise from north to south only varies by ± 0.025 m by 2150 (relative to the central location).

4.0 References

- Auckland Regional Council, 1999. Guidelines for stormwater runoff modelling in the Auckland Region. TP108. Prepared for Auckland Regional Council by Beca Carter Hollings & Ferner Ltd.
- Ministry for the Environment, 2017. Coastal hazards and climate change: Guidance for Local Government. Bell, R.G., Lawrence, J., Allan, S., Blackett, P., Stephens, S.A. (eds). Wellington: Ministry for the Environment. <https://environment.govt.nz/publications/coastal-hazards-and-climate-change-guidance-for-local-government/>
- Ministry for the Environment, 2018. Climate change projections for New Zealand: Atmosphere projections based on simulations from the IPCC Fifth Assessment, 2nd edition. Wellington: Ministry for the Environment. <https://environment.govt.nz/publications/climate-change-projections-for-new-zealand/>
- Ministry for the Environment, 2022a. Aotearoa New Zealand's first national adaptation plan. Wellington: Ministry for the Environment. <https://environment.govt.nz/publications/aotearoa-new-zealands-first-national-adaptation-plan/>
- Ministry for the Environment, 2022b. National adaptation plan and emissions reduction plan: Resource Management Act 1991 guidance note. Wellington: Ministry for the Environment. <https://environment.govt.nz/publications/national-adaptation-plan-and-emissions-reduction-plan-resource-management-act-1991-guidance-note/>
- Ministry for the Environment, 2024. Coastal hazards and climate change guidance. <https://environment.govt.nz/publications/coastal-hazards-and-climate-change-guidance/>
- Parliamentary Commissioner for the Environment, 2015. Preparing New Zealand for rising seas: Certainty and Uncertainty, <https://pce.parliament.nz/media/fgwje5fb/preparing-nz-for-rising-seas-web-small.pdf>
- Pearce, P., Bell, R., Bostock, H., Carey-Smith, T., Collins, D., Fedaeff, N., Kachhara, A., Macara, G., Mullan, B., Paulik, R., Somervell, E., Sood, A., Tait, A., Wadhwa, S., Woolley, J.-M. 2020. Auckland region climate change projections and impacts. Revised September 2020. Prepared by the National Institute of Water and Atmospheric Research, NIWA, for Auckland Council. Auckland Council Technical Report, TR2017/030-3 <https://knowledgeauckland.org.nz/publications/auckland-region-climate-change-projections-and-impacts-revised-september-2020/>
- Roberts, R., Carpenter, N., Klinac, P. 2020. Auckland's exposure to coastal inundation by storm-tides and waves. Auckland Council Technical Report, TR2020/024 <https://www.aucklandcouncil.govt.nz/environment/what-we-do-to-help-environment/Documents/coastal-inundation-in-auckland.pdf>

ISSN 2230-4541 (Print)
ISSN 2230-455X (Online)

ISBN 978-1-991146-30-4 (Print)
ISBN 978-1-991146-31-1 (PDF)

Auckland Council disclaims any liability whatsoever in connection with any action taken in reliance of this document for any error, deficiency, flaw or omission contained in it.

© 2024 Auckland Council, New Zealand

For more information contact climate@aucklandcouncil.govt.nz